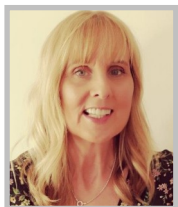


All feedback needs to be received by
Sunday 20th February.

If you want more information or to talk to us please
use the contact details below.



Sharon Vernon

Operational Support Manager

Mobile - 07786 434849

E-mail— Sharon.vernon2@nhs.net

Lesley Gledhill



**Participation and
Engagement Practitioner**

Mobile - 0782 552 2489

E-mail— l.gledhill@nhs.net



@cwpnhs

www.cwp.nhs.uk



**Cheshire and Wirral
Partnership**
NHS Foundation Trust

CWP Autism Strategy Review

Helping people to be
the best they can be

Introduction

Cheshire and Wirral Partnership NHS Foundation Trust (CWP) provides specialist health and care services for local people in partnership with other organisations, people who use our services and their families and carers. Our services include mental health and learning disabilities, community physical health and all-age disability care.

To understand the full range of specialist services provided, you can access the CWP website

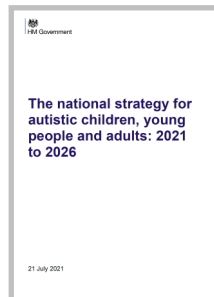
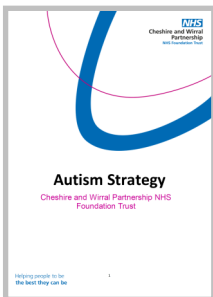


Or to find out more you can ask us as part of the review.

This co-produced engagement exercise aims to gather your feedback so that we can review and update the current CWP Autism Strategy in time to launch a co-produced strategy for World Autism Awareness Day on 2nd April 2022.

In doing this we also want to ensure that we take account of the National Autism Strategy.

You can read the strategies by clicking on the images below



How you can help?

It is important that we offer a variety of ways in which you can tell us your views:

- Smart survey
- Word version of the smart survey
- Talk to us individually or in a group. This can be by telephone, virtual meeting e.g Teams or in person
- E-mail and free text

Links to the surveys

Smart Survey



www.smartsurvey.co.uk/s/CWPAutismStrategyReview

QR Link to Smart Survey



Word Version (click icon to download)

